

Godox 神牛

DP II

专业影室闪光灯
Professional Studio Flash



深圳市神牛摄影器材有限公司
GODOX Photo Equipment Co., Ltd.

地址/Add: 深圳市宝安区福永镇福洲大道西新和村华发工业园A4栋
Building A4, Xinhe Huafa Industrial Zone, Fuzhou RD West, Fuyong
Town, Baoan District, Shenzhen 518103, China

电话/Tel: +86-755-29609320(8062) 传真/Fax: +86-755-25723423

邮箱/E-mail: godox@godox.com

<http://www.godox.com>

705-DP2000-00

Made In China

CE RoHS 回收标志

Instruction Manual
说明书

Chinese English Bilingual | 中英文双语

前言

感谢您使用DP11系列影室闪光灯！

DP11系列影室闪光灯为摄影创作提供功能丰富、性能稳定的光效解决方案。磨砂质感，坚固耐用。机身配备无线功率插座，选配无线功率遥控器组成无线功率调节和触发系统。保荣卡口兼容各种影室附件，光效创意无与伦比，为婚纱摄影、广告拍摄、人像以及时尚摄影等提供理想光源。

- 内置神牛2.4G无线X系统
- 1/2000~1/8000秒闪光持续时间，回电快速
- 选配X1、XT16或者FT-16功率遥控器，可远程控制闪光灯功率大小、造型灯开关、蜂鸣器功能及引闪
- 40级闪光强度任意调节，LCD屏1/16-1/1精准定位输出功率
- 全程变化保持在5600±200K范围之内，150W造型灯亮度可调
- 兼容性强，保荣卡口兼容各类影室附件，实现多种光效创意
- 人机工程学面板，3秒后调节参数智能记忆，开机自动恢复

目录

- | | | | |
|----|----------|----|-----------|
| 01 | 前言 | 05 | • 试闪按钮 |
| 02 | 警告 | 05 | • 同步触发 |
| 02 | 注意事项 | 05 | • GR/CH按钮 |
| 03 | 部件 | 05 | • 光控使用 |
| | • 机身 | 06 | • 声音提示 |
| | • LCD显示屏 | 06 | • 组合键 |
| | • 附件 | 06 | • 报警显示 |
| | • 可选购附件 | 06 | • 记忆存储功能 |
| 04 | 使用 | 06 | • 无线控制功能 |
| 04 | • 固定闪光灯 | 06 | • 装卸闪光灯管 |
| 04 | • 接通电源 | 07 | 产品参数 |
| 05 | • 造型灯使用 | 07 | 维护保养 |
| 05 | • 功率调节 | | |

警告

在使用本设备前请仔细阅读以下警告内容，并妥善保管以便所有本产品使用者可随时参阅。

- ▲ 请勿私自拆卸产品，如产品出现故障须由本公司或授权的维修人员进行检查维修。
- ▲ 请保持干燥：请勿用湿手接触产品，亦不可将产品浸入水中或暴露于雨中。
- ▲ 请勿让儿童接触本产品。
- ▲ 摄影灯适用于通风的环境，使用时请保持灯光源部分及散热孔不被堵塞，请勿在易燃易爆的环境中使用。
- ▲ 摄影灯采用电源插头做为断接装置，应保持随时便于操作。
- ▲ 使用时严禁用手接触灯光发热部件。
- ▲ 安装及连接附件时，请关闭开关断开电源，装卸闪光灯管/造型灯时，请确认灯管为冷却状态，避免烫伤，还需佩戴绝缘手套。
- ▲ 请勿将闪光灯头正对人眼闪光(特别是婴儿的眼睛)，否则可能会在短时间造成视力障碍。
- ▲ 在不使用时，请断开电源。

注意事项

- ▲ 闪光灯在全功率的情况下连续引闪30次后，需冷却3分钟左右。如果连续使用而不冷却就会产生高温积热。
- ▲ 不可长时间连续使用造型灯，否则可能造成安装在灯头上的柔光箱等易燃附件燃烧。有易燃附件时建议不要连续使用造型灯超过10分钟。如使用超过10分钟，请冷却1分钟后再继续使用。
- ▲ 使用束光筒时，请勿长时间点亮造型灯或过频闪光(全功率每分钟不多于6次)。积热会导致闪光灯外壳受损或造成灯的损坏。
- ▲ 避免突然的碰撞，防止闪光灯管或造型灯受损。

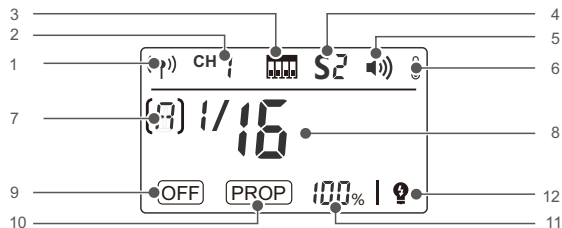
部 件

• 机身



- | | | |
|-----------------|---------------|------------|
| 1. 电源插座 | 8. BUZZ蜂鸣按键 | 15. 保险丝座 |
| 2. 同步线插孔 | 9. 外置无线控制插座 | 16. 托架 |
| 3. 电源开关 | 10. LCD显示屏 | 17. 伞孔 |
| 4. TEST试闪按键 | 11. 光控接收器 | 18. 方向调节把手 |
| 5. MOD/OFF造型灯按键 | 12. 造型灯指示灯 | |
| 6. S1/S2光控模式按键 | 13. 试闪指示灯 | |
| 7. GR/CH频道/组别按键 | 14. 调节旋钮+SET键 | |

• LCD显示屏



- | | | |
|--------------|----------------|-------------------|
| 1. 2.4G内置无线符 | 6. 温度报警显示 | 11. 造型灯在百分比显示功率模式 |
| 2. 内置无线频道 | 7. 内置无线组别 | 12. 造型灯在闪光灯引闪的时候灭 |
| 3. 内置无线频道拨码盘 | 8. 闪光灯功率显示 | |
| 4. 光控显示 | 9. 造型灯关 | |
| 5. 声音显示 | 10. 造型灯在PROP模式 | |

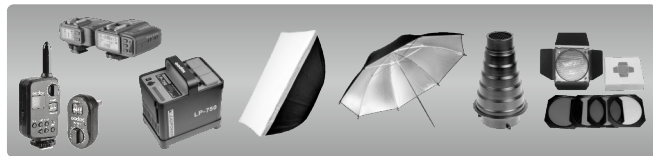
• 附件

1. 电源线
2. 灯头保护罩
3. 造型灯
4. 说明书



• 可选购附件

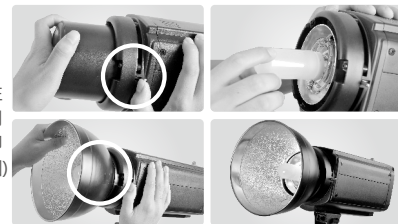
可搭配本公司以下摄影附件使用，以获得最佳的拍摄效果和使用体验：X1、XT16或FT-16功率遥控器、逆变器、柔光箱、反光伞、灯架、蜂巢、雷达罩、束光筒等。



使 用

• 固定闪光灯

1. 取下灯头保护罩，装上造型灯，安装上标准反光罩或其他影室附件。(如想卸下标准反光罩或其他影室附件，请往后按灯头上的附件释放钮，同时逆时针旋转反光罩至松开即可，以标准反光罩为例，如图)
2. 将闪光灯设备安装在一个合适的灯架上，调整好托架(16)并扭紧固定，根据需要使用方向调节把手(18)来调节灯的方向。伞孔(17)可以插上各类影楼伞。



• 接通电源

通过电源线把闪光灯接通到交流电源上，拨动闪光灯上的电源开关(3)，此时LCD显示屏(10)亮起，表示连接正常。

• 造型灯使用

造型灯按键(5)短按可选择造型灯的模式(OFF、PROP、百分比)；长按可以开启或关闭造型灯在引闪的时候灭的功能。

造型灯点亮4小时后会自动关闭，以防在无人状态的长时间点亮，导致高温积热产生。

OFF：造型灯关闭。

PROP：造型灯的功率随着闪光灯的变化而变化，闪光灯功率越大，造型灯越亮

百分比：手动调节造型灯亮度(5%-100%)。

设置：

- 1、 屏幕显示<OFF>时，短按<MOD/OFF>键进入PROP模式，令屏幕显示PROP。
- 2、 屏幕显示<PROP>时，短按<MOD/OFF>键进入百分比调节模式，令屏幕显示百分比亮度。短按SET键，令百分比亮度闪烁，旋转调节旋钮可从5%至100%选择亮度。再次短按SET键，退出调节。
- 3、 屏幕显示<PROP>时，短按<MOD/OFF>键可返回<OFF>模式。
- 4、 在非<OFF>模式下，长按2秒<MOD/OFF>键开启造型灯在引闪的时候灭的功能，屏幕显示(🔇)，再长按<MOD/OFF>键退出此模式。



如有易燃附件在灯头上，不可长时间点亮造型灯，最好是点亮10分钟后请冷却1分钟后再继续使用，并注意易燃附件温度。

• 功率调节

闪光功率通过调节旋钮(14)来控制，可以从“1/32”至“1/1”自由调节，LCD显示屏(10)将对所选择功率作准确显示，满足客户在不同环境下对光源的要求。LCD显示屏显示“-”时，表示闪光引闪功能关闭。从高档调节至低档，需要按下试闪按钮来放电以获得所需的功率。

• 试闪按钮

欲使闪光灯测试闪光而不拍照，请按试闪按钮(4)。摄影师可以通过试闪按钮结合功率调节旋钮(14)来调节闪光亮度。按住SET键并开机，可查看闪光灯的版本号。

• 同步触发

同步线插孔(2)规格为Φ3.5mm，此处可插入同步线或者触发器触发插头对闪光灯进行同步引闪。



• GR/CH按钮

短按可以调节内置无线组别，LCD组别显示在闪烁时，旋转调节旋钮可以更改组别；长按可以选择内置无线频道，LCD频道显示在闪烁时，旋转调节旋钮可以更改频道。

• 光控使用光控模式有3种选择，由SLAVE光控模式按键(6)进行切换。

- 非光控模式：LCD没有显示S1或S2，表示光控功能已关闭。
- S1光控单元设置：按<S1/S2>键选择S1功能，闪光灯可作为副灯使用，创造多种照明效果，适用于手动闪光环境。它会与主闪光灯的第一次闪光同步触发闪光，效果与使用无线引闪器一致。
- S2光控单元设置：按<S1/S2>键选择S2功能，闪光灯可作为副灯使用，适用于TTL闪光环境。具有防预闪功能，使用带一次预闪功能的相机能用光控实现同步拍摄。它会与主闪光灯的第二次闪光同步触发闪光，即2次光控引闪。

• 声音提示

蜂鸣按键(8)控制蜂鸣提示的打开和关闭，当LCD显示声音符时，表示蜂鸣提示音打开；当LCD没有显示声音符时，表示蜂鸣提示音关闭。每次回电充满时会响“BI—”一声，提示可以引闪。

• 组合键

同时长按<GR/CH>键和<S1/S2>键可以开/关内置无线，LCD没有显示无线符和频道表示内置无线关闭，显示则表示内置无线开启。同时按住<S1/S2>键和<BUZZ>键，可恢复出厂设置。

• 报警显示

E0没有连接温度传感器
E1充电中，1秒内检测电容电压没有上升
E2升温最快的元器件超过额定温度
E3放电电容电压>额定值+10%
报警声音，BIBI 0.5s响一次，单击SET键可停止报警鸣叫。

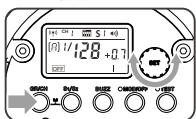
• 记忆存储功能

闪光灯设有参数记忆功能，调节参数3秒后未变更的，闪光灯会自动存储设置好的参数。下次开机使用时初始设置跟关机前一致。

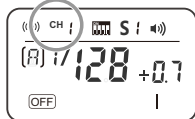
• 无线控制功能

闪光灯内置2.4G无线传输，可以配合X1、XT16功率遥控器使用。同时按下<GR/CH>和<S1/S2>按钮开启内置无线，令屏幕显示<(Ⓜ)>，此时表示进入内置2.4G无线状态。如果在拍摄现场不止一个无线闪光系统，您可以通过更改通讯频道来防止信号干扰。保证主控单元和从属单元设置为相同的频道编号即可。

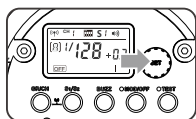
设置通讯频道



1 长按<GR/CH>按钮2秒, 频道编号闪烁显示。

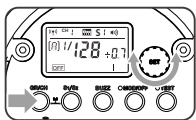


2 旋转调节旋钮从1至32中选择频道。

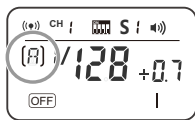


3 按下<SET>设置按钮, 确定。

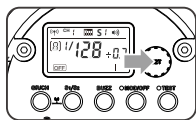
设置通讯组别



1 短按<GR/CH>按钮, 组别编号闪烁显示。



2 旋转调节旋钮从0至F中选择组别。



3 按下<SET>设置按钮, 确定。

闪光灯内置无线控制插座,配合特定遥控器使用,您可以实现对闪光灯的无线控制。将FT系列遥控器的接收端插入无线控制插座,手持遥控器发射端,即可远程控制闪光灯的功率开关和大小、闪光灯触发等。您也可以将发射端置于相机热靴上,通过相机快门来进行同步引闪。



❶ 更多遥控器的使用方法,请查阅FT系列遥控器的说明书。

装卸闪光灯管

关闭所有电源并拔下电源线,带上绝缘手套,将闪光灯管上的铁丝拧松,用平衡力拿住灯管两脚间,轻轻往外拉出卸下旧灯管。将旧灯管两脚上的套管取下套到新灯管两脚,拿住新灯管两脚间,对准灯头上两铜柱,用平衡力往里推进。最后将铁丝绕灯管弹片并拧紧固定好灯管。



产品参数

型号	DP300II	DP400II	DP600II	DP800II	DP1000II
闪光能量	300Ws	400Ws	600Ws	800Ws	1000Ws
闪光指数(m ISO 100)	58	65	80	88	92
色温	5600±200K				
电源电压	AC110V-120V~60Hz或AC220V-240V~50Hz				
闪光功率调控	OFF, 6.0~10.0 (1/16-1/1)				
造型灯功率	150W				
闪光触发控制方式	同步线插孔, 光控感应, 试闪按钮, 无线控制插座				
闪光持续时间	1/2000~1/800s				
同步端口输出参数	5V				
USB端口输出参数	5V/200mA (仅限神牛接收器)				
保险丝	5A			8A	
回电时间	0.3-1.2 秒		0.3-1.5 秒		0.4-2 秒
尺寸	灯体直径12.5Φcm, 含托架高21.5cm, 含保护罩长42cm				
净重	约2.5kg	约2.59kg	约3.02kg	约3.2kg	约3.3kg

维护保养

- 闪光灯在工作时,如发现异常,应立即关掉电源,查明原因。
- 灯体应避免震动,平时注意表面除尘。
- 灯体稍有发热为正常现象,无特别需要时,勿连续引闪。
- 除灯管与造型灯消耗品用户可用原厂配置的自行装卸更换外,所有闪光灯概由本厂指定可供原厂配件之维修部负责。
- 1年保修,由于灯管与造型灯为消耗品,不在1年保修范围。
- 经发现擅自检修此闪光灯,将取消闪光灯之一年保修期,维修需要收取相关费用。
- 如果本品出现故障或者被水淋湿,唯有在专业人员维修后方可继续使用。
- 在维修和清洁本品时请断开电源。
- 如有技术更改,恕不另行通知。

FOREWORD

Thanks for choosing DP11 series studio flash.

DP11 series studio flash provides a functional and durable lighting solution for studio and workshop shooting. It is equipped with a wireless control port so that an optional remote power control and flash triggering system is available. With a solid build, it adopts Bowens-style mount to add various studio light shaping accessories. The flash performs excellently in portrait and product shooting, wedding photography, advertising and fashion commercial photography. The DP11 flash offers:

- Built-in Godox 2.4G wireless X system
- 1/2000 to 1/800 second short flash duration and fast recycling with 150W modeling lamp
- Wireless control of the flash power ratio, modeling lamp and buzzer, as well as flash triggering
- Anti-preflash function, enabling synchronization with cameras having a one-preflash firing system
- Precise output control, 40 steps from 1/16-1/1
- Stable color temperature ranging within 5600±200K
- Compatible Bowens mount adds various accessories to give multiple lighting effects
- Adjusted settings are remembered after 3 seconds and recovered after a restart

CONTENTS

09	Foreword	15	• Slave Trigger Model
10	Warning	15	• Buzz Function
10	Caution	15	• Key Combination
11	Names of Parts	15	• Alarm Display
11	• Body	15	• Memory Function
12	• LCD Panel	16	• Wireless Control Function
12	• Accessories	17	• Tube Replacement
12	• Separately Sold Accessories	18	Technical Data
13	Operations	18	Maintenance
13	• Flash Preparation		
13	• Power Connection		
13	• Modeling Lamp		
14	• Power Output Control		
14	• Test Button		
14	• Sync Triggering		
14	• GR/CH Button		

Warning

To prevent damage to the product or injury to you or to others, read the following warnings in their entirety before using this product. Keep these Warning where users can read them for ready reference.

- ⚠ Do not disassemble or modify. Should the product break down, send the defective back to the authorized service center for inspection and maintenance.
- ⚠ Keep dry. Do not handle with wet hands, immerse in water, or expose to rain.
- ⚠ Keep out of reach of children.
- ⚠ Please put the device in a ventilation environment and keep the parts of lighting and heat dissipation holes are unobstructed. Do not use in flammable environment.
- ⚠ As this product adopts make and break device, please keep it easy to be used.
- ⚠ No touching the heating parts of this product.
- ⚠ Please turn off the power and wear insulated gloves before installing and connecting accessories. When replacing the tube or modeling lamp, please make sure that the tube is cool and wear insulated gloves to prevent burns.
- ⚠ Do not flash directly towards naked eyes (especially those of babies), otherwise it may lead to visual impairment.
- ⚠ Disconnect from the power supply when it will not be used for an extended period.

CAUTION

- ⚠ After 30 continuous flashes at full power, the flash should be cooled down for about 3 minutes. Overheating will occur if it is used continuously without cooling down.
- ⚠ Do not keep using the modeling lamp for a long time; otherwise flammable accessories attaching to flash head, e.g. softbox will get burnt. A 10-minute time is recommended in this case. After 10 minutes, cool it down for 1 minute.
- ⚠ When using a snoot, do not keep the modeling lamp on for a long time or fire too frequently (not over six times for one minute). Overheating will result in damages for strobe housing and/or studio light.
- ⚠ Avoid sudden impacts as this can damage the flash tube and/or modeling lamp.

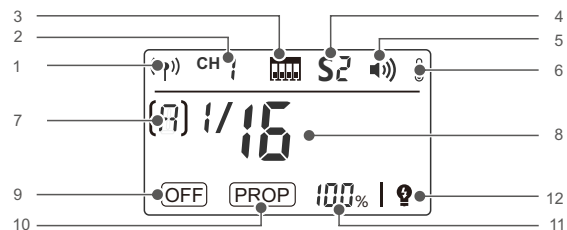
NAMES OF PARTS

• Body



- | | |
|---------------------------------|--------------------------------|
| 1. AC Power Socket | 10. LCD Display |
| 2. Sync Cord Jack | 11. Light Sensor |
| 3. Power Switch | 12. Modeling Lamp Indicator |
| 4. Test Button | 13. Test Indicator |
| 5. MOD/OFF Modeling Lamp Button | 14. Select Dial + SET Button |
| 6. S1/S2 Slave Model Button | 15. Fuse |
| 7. Group/Channel Button | 16. Mounting Bracket |
| 8. BUZZ Button | 17. Umbrella Input |
| 9. Wireless Control Port | 18. Direction Adjusting Handle |

• LCD Panel



- | | |
|--|--|
| 1. Built-in 2.4G Wireless Transmission | 8. Flash Output |
| 2. Built-in Wireless Channel | 9. Modeling Lamp is off |
| 3. Built-in Wireless Channel Dial | 10. Modeling Lamp is in the PROP mode |
| 4. Slave Model Indicator | 11. Modeling Lamp shows the power in percentage |
| 5. Beep | 12. Modeling Lamp is off when triggering the flash |
| 6. Temperature Alarm Display | |
| 7. Built-in Wireless Group | |

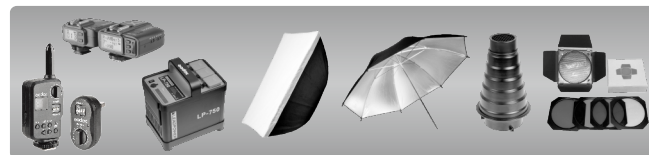
• Accessories

1. Power Cord
2. Lamp Cover
3. Modeling Lamp
4. Instruction Manual



• Separately sold accessories

The product can be used in combination with the following accessories sold separately, so as to achieve best photography effects: X1, XT16 or FT-16 remote control, Power Inverter, Softbox, Photographic Umbrella, Light Stand, Barndoor, Snoot, etc.



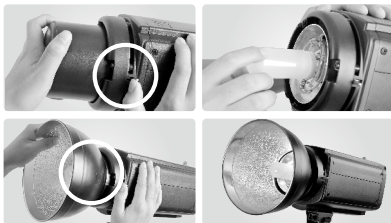
OPERATIONS

• Flash Preparation

1. Take down the lamp cover. Install the modeling lamp and put on the glass protection cover and the standard reflector.

(To uninstall the standard reflector, press the release button on the flash head and turn the standard reflector counter-clockwise to take it out, as illustrated in the picture.)

2. Attach the flash unit onto an appropriate light stand. Adjust the mounting bracket (16) for a good angle and make sure it is tightened and fixed. Use the direction adjusting handle (18) to adjust the flash to a desired direction. Umbrella input (17) is for different photo umbrellas to put in.



• Power Connection

Use the power cord to connect the flash to an AC power source and turn on the power switch (3).

• Modeling Lamp

Short press the Modeling Lamp Button (5) to choose the modeling lamp's mode (OFF, PROP and percentage); and long press the Modeling Lamp Button (5) to switch on or off the function that the modeling is off when triggering the flash.

Modeling lamp will be off automatically after lighting for 4 hours, avoiding overheat due to long-time lighting when the user is not nearby.

OFF: Modeling lamp is off.

PROP: The modeling lamp's power changes with the flash's power. The bigger power the flash has, the brighter the modeling lamp is.

Percentage: Adjust the modeling lamp's light brightness manually from 5% to 100%.

Setting:

1. When OFF is displayed, short press the <MOD/OFF> Button to enter PROP mode. Now the LCD panel shows PROP.
2. When PROP is displayed, short press the <MOD/OFF> Button to enter Percentage mode. Short press the SET Button and the percentage value is blinking. Turn the Select Dial to choose the light brightness from 5% to 100%. Short press the SET Button to exit.

3. When PROP is displayed, short press the <MOD/OFF> Button can back to <OFF> mode.
4. When in NON OFF mode, long press the <MOD/OFF> Button for 2 seconds to switch on the function that the modeling is off when triggering the flash. Now the LCD panel shows (💡). Long press the <MOD/OFF> Button again to exit this mode.



When there is flammable accessory on the flash unit, do not keep the modeling lamp on for a long time. It is recommended to cool it down for one minute after 10 minutes' working.

• Power Output Control

Select dial (14) decides different power output, satisfying light requirements in different environment. The power is adjustable freely from 1/32 to 1/1 which will be accordingly shown on the LCD display (10). "--" on the display indicates that the flash triggering function is turned off. Press the test button to discharge power when the flash output is adjusted from high to low.

• Test Button

To fire the flash without taking a picture, press the test button (4). It can also help adjust the flash brightness when combined with the select dial (14). Press the SET button and turn on the flash to view its version.

• Sync Triggering

The sync cord jack (2) is a $\Phi 3.5$ mm plug. Insert a trigger plug here and the flash will be fired synchronously with the camera shutter. Synchronously press the S1/S2 button and BUZZ button to recover factory settings.



• GR/CH Button

Short press the GR/CH button can adjust the built-in wireless group. When the group indicator on the LCD panel is blinking, turn the select dial to change. And long press the GR/CH button can adjust the built-in wireless channel. When the channel indicator on the LCD panel is blinking, turn the select dial to change.

• Slave Trigger Model

Three slave triggering models are available and can be set by pressing slave model button (6).

◆No optical control: S1 or S2 is not displayed on the LCD panel, indicating the slave triggering function is shut down.

◆Optic S1 Secondary Unit Setting: In M manual flash mode, press <S1/S2> button so that this flash can function as an optic S1 secondary flash with optic sensor. With this function, the flash will fire synchronously when the main flash fires, the same effect as that by the use of radio triggers. This helps create multiple lighting effects.

◆Optic S2 Secondary Unit Setting: Press <S1/S2> button so that this flash can also function as an optic S2 secondary flash with optic sensor in M manual flash mode. This is useful when cameras have pre-flash function. With this function, the flash will ignore a single "pre-flash" from the main flash and will only fire in response to the second, actual flash from the main unit.

• Buzz Function

The BUZZ button (8) is used for deciding whether there is sound reminder for ready flash after recharging. When the buzz indicator is on the LCD panel, the buzz function is working; when it disappears, the buzz function is not working. A "BI" sound will be heard when it's fully charged.

• Key Combination

Synchronously press the <GR/CH> Button and the <S1/S2> Button can turn on/off the built-in wireless transmission. If there are no wireless and channel indicators displayed on the LCD panel, the built-in wireless transmission is off. On the contrary, the built-in wireless transmission is on.

• Alarm Display

E0 The temperature sensor is not connected.

E1 When charging, the capacitance and voltage are not rising within 1 second.

E2 The fastest heating-up component is over the extra temperature.

E3 Discharged capacitance and voltage > rating +10%

Alarm sounds, BIBI, ringing per 0.5 second. Press SET button to stop alarming.

• Memory Function

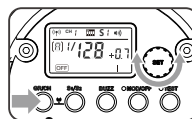
The device is equipped with memory function for the panel setting. It will help remember the panel setting 3 seconds after you set it. When starting up the flash next time, the panel setting will be the same as that before powering it off.

• Wireless Control Function

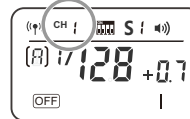
The flash unit has built-in 2.4G wireless transmission, which can be used together with X1 and XT16 flash trigger.

Synchronously press the <GR/CH> Button and the <S1/S2> Button can turn on the built-in wireless transmission and the <(P)> is displayed. If there are other wireless flash systems nearby, you can change the channel IDs to prevent signal interference. The channel IDs of the master unit and the slave unit(s) must be set to the same.

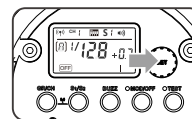
Setting the Communication Channel



1 Long press the <GR/CH> Button for 2 seconds until the channel IDs is blinking.

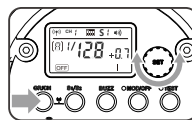


2 Turn the Select Dial to choose the channel from 1 to 32.

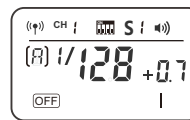


3 Press the <SET> Button to confirm.

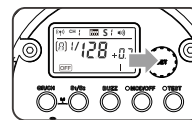
Setting the Communication Group



1 Short press the <GR/CH> Button for 2 seconds until the group IDs is blinking.




2 Turn the Select Dial to choose the group from 0 to F.



3 Press the <SET> Button to confirm.

The flash unit is built in with a Wireless Control Port so that you can wirelessly adjust the power level of the flash and the flash triggering. To control the flash wirelessly, you need a FT-16 remote control set (on-camera and on-flash). Insert its receive end into the Wireless Control Port on the flash and insert the transmit end into the camera hot shoe. Settings made on the hotshoe-mounted transmit and receive ends will be wirelessly communicated to the flash. Then you can press the camera shutter release button to trigger the flash. You can also hold the transmit end at hand to control your off-camera flash.



 For full instructions on the use of FT series remote control, see its user manual.

• Tube Replacement

Shut down the power and remove the power cord before replacing the flash tube and wear insulated gloves. Then, loosen the iron wire on the tube, keep a balanced hold on the two feet of the flash tube and pull out the old tube gently. Take down the feet casing from the old tube and put it on the new one. Hold two feet of the new tube, and target directly towards the two copper outlets, then push them slightly in. Twine the iron wire on the stainless steel sheet to fix the flash tube.



TECHNICAL DATA

Model	DP300II	DP400II	DP600II	DP800II	DP1000II
Max Power (WS)	300Ws	400Ws	600Ws	800Ws	1000Ws
Guide Number(m ISO 100)	58	65	80	88	92
Color Temperature	5600±200K				
Operating Voltage	AC110V-120V~60Hz or AC220V-240V~50Hz				
Power Output Control	OFF, 6.0~10.0(1/16~1/1)				
Modeling Lamp (W)	150W				
Triggering Method	Sync cord, Test button, Slave triggering, Wireless control port				
Flash Duration	1/2000~1/800s				
Parameters Output from the Sync Cord Jack	5V				
Parameters Output from the USB Port	5V/200mA (only for Godox receiver)				
Fuse	5A		8A		
Recycle Time	0.3-1.2s		0.3-1.5s	0.4-2s	
Dimension	Flash diameter 12.5CM, height of flash with handle 21.5CM, length of flash with lamp cover 42CM				
Net Weight	Approx. 2.5kg	2.59kg	3.02kg	3.2kg	3.3kg

MAINTENANCE

- Shut down the device immediately when it works abnormally and find out the reason.
- Avoid sudden impacts and the lamp should be dedusted regularly.
- It is normal for the lamp to be warm when in use. Avoid continuous flashes if unnecessary.
- Maintenance of the flash must be performed by our authorized maintenance department which can provide original accessories. The flash-tube and the modeling lamp are user-replaceable. Replacement tubes and lamps can be obtained from the manufacturer.
- This product, except consumables e.g. flash tube and modeling lamp, is supported with a one-year warranty.
- Unauthorized service will void the warranty.
- If the product had failures or was wetted, do not use it until it is repaired by professionals.
- Disconnect the power when cleaning the flash or when changing the flashtube / modeling lamp.
- Changes made to the specifications or designs may not be reflected in this manual.